



# Fine Stamps of Great Britain

ANDREW VAUGHAN PHILATELICS

LIST 302



ANDREW VAUGHAN PHILATELICS LIMITED

PO BOX 6051 TAMWORTH STAFFS B78 3JB ENGLAND

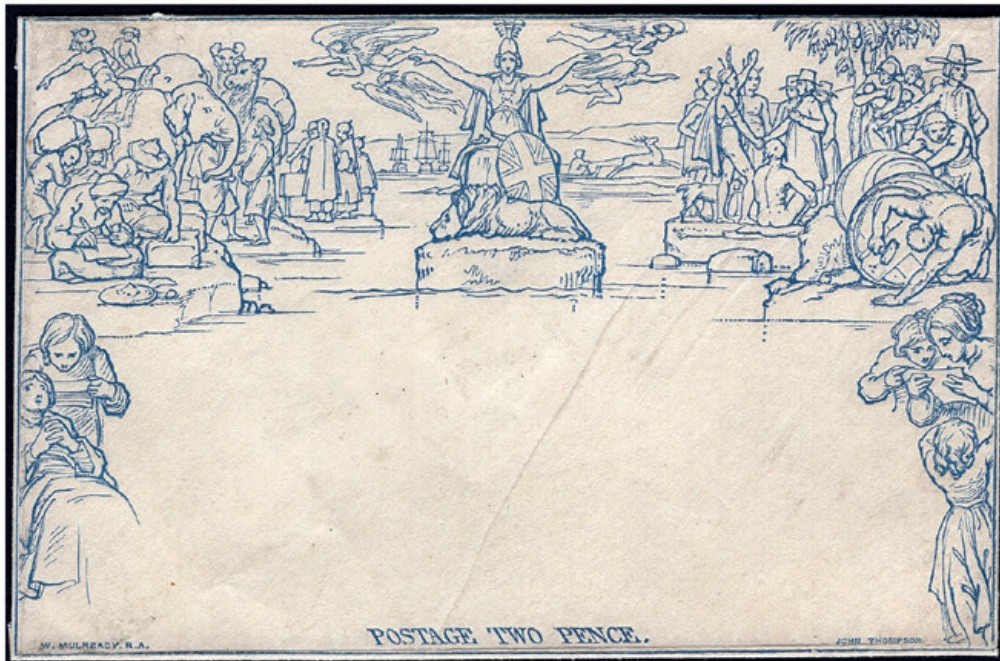
TEL: 01827 63367 WEBSITE: WWW.STAMPSGB.CO.UK | E-MAIL: SALES@STAMPSGB.CO.UK







1



2



4



5



6



8



9



10



12



13



20



22



23



24



25



26



27



28



29



30



31



32



33



34



35



36



37



38



39



40



41



42



43









110



111



112



113



114



116



117



118



121



122



123



124



125



126



127



128



129



130



131



132



133



134



135



136



137



138



139



140



141



142



143



144



145



146



148



149



150



151



152



153



155



157



159



160



161



162



163



164



165



166



167



168



169



170



171



173



175



172



177



178



179



180



174



176



**REMEMBER YOU CAN SPREAD YOUR  
PAYMENT UP TO 12 MONTHS  
NO EXTRA CHARGE**

1	Sg ME1 1d Mulready Letter Sheet Stereo A2. A very fine unused example	£95.00
2	Sg ME4 2d Mulready Envelope Stereo a200. A very fine unused example	£150.00
3	Sg 2 1d Black Plate 1A GA. A superb used 4 huge margin example with crisp Red Maltese Cross	£495.00
4	Sg 2 Spec AS5 1d Black Plate 1b EL. A fine used 4 margin example tied to small piece, with Conway Date Stamp	£195.00
5	Sg 2 Spec AS5e 1d Black Plate 1b PJ "RETOUCHED CHECK LETTERS". A very fine used 4 margin example	£195.00
6	Sg 2 Spec AS5h 1d Black Plate 1b IJ "Re-cut Sidelines". A very fine used 4 margin example	£195.00
7	Sg 2 1d Black Plate 2 EK. A very fine used example with full Black Maltese Cross	£295.00
8	Sg 2 Spec AS14f 1d Black Plate 2 HH "NO RAY FLAW". A very fine used 4 margin example	£195.00
9	Sg 3 Spec AS21a 1d Grey Black Plate 3 PK "Small Loop P". A very fine used 4 margin example	£150.00
10	Sg 2 Spec AS23bf 1d Black Plate 4 DB "DOUBLE LETTER & BLUETE PAPER". A fine used 4 close to good margin example	£225.00
11	Sg 1 1d Intense Black Plate 5 JK. A superb used 4 margin example with black Maltese Cross	£375.00
12	Sg 2 Spec AS41a 1d Black Plate 6 SA "RE-ENTRY". A very fine used 4 margin example	£275.00
13	Sg 3 1d Grey Black Plate 7 SA. A fine used 4 margin example	£150.00
14	Sg 2 Spec AS49za 1d Black Plate 8 HJ. A fine used 4 margin example with 1844 Cancel	£375.00
15	Sg 3 Spec AS72 1d Grey Black Plate 11 HC. A superb used 4 large margin example with light Maltese Cross accompanied by RPS certificate	£2,750.00
16	Sg 4 2d Deep Full Blue Plate 1 GH. A superb used 4 margin example with Red Maltese Cross	£550.00
17	Sg 5 2d Blue Plate 1 QJ. A very fine used 4 margin example	£450.00
18	Sg 5wl 2d Blue Plate 1 No 12 in Maltese Cross. A very fine used 4 margin example accompanied by RPS certificate	£7,250.00
19	Sg 4 2d Deep Full Blue Plate 2 MD. A very fine used 4 margin example	£425.00
20	Sg 7 1d Red Plate 2 DE. A very fine used 4 margin example with clear profile	£150.00
21	Sg 7 Spec AS7b 1d Red Plate 1b MK RE-ENTRY. A very fine used 4 margin example	£175.00

22	Sg 7 Spec AS7e 1d Red Plate 1b NI "RETOUCHED CHECK LETTERS". A fine used 4 margin example	£130.00
23	Sg 7 Spec AS7e 1d Red Plate 1b PJ retouched check letters. A very fine used 4 margin example	£175.00
24	Sg 7 Spec AS7f 1d Red Plate 1b AE "DOUBLE LETTER". A fine used 4 margin example	£150.00
25	Sg 7 Spec AS7g 1d Red Plate 1b OB "BURR RUBS". A fine used 4 margin example	£150.00
26	Sg 7 Spec AS7g 1d Red Plate 1b OD "BURR RUBS". A fine used 4 margin example	£150.00
27	Sg 7 Spec AS7g 1d Red Plate 1b RE "BURR RUBS". A very fine used 4 margin example	£175.00
28	Sg 7 Spec AS7h 1d Red Plate 1b FH Re-cut Sidelines. A very fine used 4 margin example	£150.00
29	Sg 7 Spec AS7h 1d Red Plate 1b GF "Re-cut Sidelines". A fine used 4 margin example	£95.00
30	Sg 7 Spec AS7h 1d Red Plate 1b JJ Re-cut Sidelines. A fine used 4 margin example	£130.00
31	Sg 7 Spec AS7h 1d Red Plate 1b KD Re-cut Sidelines. A very fine used 4 margin example	£175.00
32	Sg 7 Spec AS7h 1d Red Plate 1b KF Re-cut Sidelines. A fine used example	£150.00
33	Sg 7 Spec AS7h 1d Red Plate 1b KG Re-cut Sidelines. A fine used example	£150.00
34	Sg 7 Spec AS7h 1d Red Plate 1b KH "LEFT SIDE RE-CUT". A very fine used 4 margin example	£175.00
35	Sg 7 Spec AS7h 1d Red Plate 1b LL Re-cut Sidelines. A fine used 4 margin example	£130.00
36	Sg 7 Spec AS7h 1d Red Plate 1b MC Re-cut Sidelines. A fine used example	£140.00
37	Sg 7 Spec AS7h 1d Red Plate 1b PF Re-cut Sidelines. A fine used 4 margin example	£150.00
38	Sg 7 Spec AS7h 1d Red Plate 1b QG Re-cut Sidelines. A very fine used 4 margin example	£175.00
39	Sg 7 Spec AS7k 1d Red Plate 1b DB "ROLLER FLAW". A very fine used 4 margin example	£175.00
40	Sg 7 Spec AS8 1d Red Plate 1b CG State 3 "2nd Repair". A fine used example	£250.00
41	Sg 7 Spec AS8 1d Red Plate 1b SA State 3 "2nd Repair". A very fine used 4 margin example	£250.00
42	Sg 7 Spec AS8 1d Red Plate 1b TD State 3 "2nd Repair". A fine used 4 margin example	£225.00
43	Sg 7 Spec AS8m 1d Red Brown Plate 1b AB State 3 "2nd Repair". A fine used 4 margin example	£195.00
44	Sg 7 Spec AS17 1d Red Plate 2 MF. A fine used 4 margin example	£95.00
45	Sg 7 Spec AS17i 1d Red Plate 2 FH No Ray Flaw. A very fine used 4 margin example	£175.00
46	Sg 7 Spec AS17i 1d Red Plate 2 FI "NO RAY FLAW". A fine used 4 margin example	£120.00

Call now to place your order on tel: 01827 63367



47	Sg 7 Spec AS17i 1d Red Plate 2 GH "NO RAY FLAW". A fine used 4 margin example	£120.00	73	Sg 7 Spec AS59d 1d Red Plate 9 OA "DOUBLE LETTER". A very fine used example	£75.00
48	Sg 7 Spec AS17i 1d Red Plate 2 HE "NO RAY FLAW". A very fine used 4 margin example	£140.00	74	Sg 7 Spec AS59d 1d Red Plate 9 TB. A very fine used example	£75.00
49	Sg 7 Spec AS17i 1d Red Plate 2 IE "NO RAY FLAW". A very fine used 4 margin example	£140.00	75	Sg 7 Spec AS69uc 1d Red Plate 10 LL. A superb used 4 margin example with Greenock Maltese Cross	£295.00
50	Sg 7 Spec AS17i 1d Red Plate 2 II No Ray Flaw. A fine used 4 margin example	£150.00	76	Sg 7 Spec AS74 1d Red Plate 11 FF. A superb used 4 margin example	£75.00
51	Sg 7 Spec AS17i 1d Red Plate 2 JB No Ray Flaw. A fine used 4 margin example	£175.00	77	Sg 7 1d Red Plate 11 GA. A very fine used 4 close margin example on piece with Leamington Maltese Cross	£125.00
52	Sg 7 Spec AS29c 1d Red Plate 5 CB State 3. A fine used 4 margin example	£140.00	78	Sg 7 Spec AS74 1d Red Plate 11 IE. A very fine used 4 margin example	£45.00
53	Sg 7 Spec AS29d 1d Red Plate 5 KE "DOUBLE LETTER". A fine used 4 margin example	£60.00	79	Sg 7 Spec AS74d 1d Red-Brown Plate 11 QI "CONSTANT VARIETY BASAL SHIFT". A very fine used example	£70.00
54	Sg 7 Spec AS32 1d Red Plate 5 QB State 2. A very fine used 4 margin example	£225.00	80	Sg 7 Spec AS74c 1d Red Plate 11 SE "ROLLER FLAW". A fine used 4 margin example	£50.00
55	Sg 7 Spec AS32 1d Red Plate 5 RD State 2. A fine used 4 margin example	£140.00	81	Sg 7 Spec AS74ye 1d Red Plate 11 MJ "MOTTRAM PENNY POST". A very fine used example on piece with Maltese Cross	£475.00
56	Sg 7 Spec AS32 1d Red Plate 5 SB State 2 "CV". A very fine used 4 margin example	£175.00	82	Sg 8 Spec BS3b 1d Red Plate 14 JI "DOUBLE LETTER". A superb used 4 margin example	£50.00
57	Sg 7 Spec AS51c 1d Red Plate 8 MI "DOUBLE LETTER". A fine used 4 margin example	£75.00	83	Sg 8 Spec BS3d 1d Red Plate 14 QH "BASAL SHIFT". A superb used 4 margin example	£40.00
58	Sg 7 Spec AS54 1d Red-Brown Plate 8 PG State 2. A good used example	£95.00	84	Sg 8 Spec BS3d 1d Red Plate 14 PI "BASAL SHIFT". A superb used 4 margin example	£40.00
59	Sg 7 Spec AS54 1d Red-Brown Plate 8 SH State 2 "3rd Repair" RE-ENTRY. A superb used example	£195.00	85	Sg 8 Spec BS4 1d Red Plate 15 MG. A superb used 4 margin example	£35.00
60	Sg 7 Spec AS54 1d Red-Brown Plate 8 SI State 2 "3rd Repair" RE-ENTRY. A very fine used example	£140.00	86	Sg 8 Spec BS4f 1d Red Plate 15 BJ "J FLAW". A superb used 4 margin example	£60.00
61	Sg 7 Spec AS55 1d Red-Brown Plate 8 DJ State 2 "3rd Repair" RE-ENTRY. A fine used example	£95.00	87	Sg 8 1d Red Plate 20 LK-LL. A superb used 4 marginal side margin pair	£350.00
62	Sg 7 Spec AS55 1d Red-Brown Plate 8 OF State 2 "3rd Repair" RE-ENTRY. A very fine used example	£95.00	88	Sg 8 Spec BS10f 1d Red Plate 21 SJ "J FLAW". A superb used 4 margin example	£40.00
63	Sg 7 Spec AS55 1d Red-Brown Plate 8 PA State 2 "3rd Repair" RE-ENTRY. A very fine used example	£95.00	89	Sg 8 Spec BS12va 1d Red Plate 23 FH. A very fine used 4 margin example Dorchester town postmark	£275.00
64	Sg 7 Spec AS55 1d Red-Brown Plate 8 PI State 2 "3rd Repair" RE-ENTRY. A very fine used example	£110.00	90	Sg 8 1d Red Plate 30 TH-TK. A very fine used strip of 4 with Maltese Crosses	£75.00
65	Sg 7 Spec AS55c 1d Red Plate 8 RF State 3 RE-ENTRY. A fine used example	£95.00	91	Sg 8 Spec B1ts 1d Red Plate 33 CF "NORWICH MALTESE CROSS". A very fine used 4 margin example with central strike	£175.00
66	Sg 7 1d Red Plate 9 CI. A very fine used 4 margin example	£80.00	92	Sg 8 Spec BS22t2 1d Red Plate 33 LG. A fine used 4 close to good margins with Norwich Maltese Cross	£95.00
67	Sg 7 1d Red Plate 9 IF. A very fine used 4 margin example	£75.00	93	Sg 8 Spec BS23ti 1d Red Plate 34 PB. A very fine used 4 margin example with Dublin Maltese Cross	£45.00
68	Sg 7 Spec AS59 1d Red Plate 9 CJ. A fine used 4 margin example	£50.00	94	Sg 8 1d Red Plate 35 GA (Late Usage). A superb used part sheet marginal example accompanied by RPS certificate	£125.00
69	Sg 7 Spec AS59 1d Red Plate 9 PB. A good used 4 margin example	£40.00	95	Sg 8 1d Red Plate 96 OL. A superb used 4 huge margin example	£25.00
70	Sg 7 Spec AS59 1d Red Plate 9 PJ. A fine used 4 margin example	£50.00	96	Sg 8 1d Red Plate 149 KE. A superb used 4 huge margin example	£30.00
71	Sg 7 Spec AS59d 1d Red Plate 9 CK "DOUBLE LETTER". A very fine used example	£60.00	97	Sg 8 1d Red Plate 163 HJ. A superb used 4 huge margin example	£40.00
72	Sg 7 Spec AS59d 1d Red Plate 9 DC "DOUBLE LETTER". A very fine used 4 margin example	£75.00			

Call now to place your order on tel: 01827 63367



98	Sg 8m Spec BS20b 1d Red Plate 31 RH "P CONVERTED TO R" No 10 in Maltese Cross. A very fine used 4 margin example	£125.00	121	Sg 19 Spec F1q 2d Blue Plate 4 BH "SPECTACLES VARIETY". A very fine used example	£275.00
99	Sg 8m 1d Red Plate 38 FI-FJ No 12 in Maltese Cross. A superb used 4 margin pair accompanied by RPS certificate	£295.00	122	Sg 19 Spec F1f 2d Blue Plate 4 HK "RE-ENTRY". A very fine used example with Glasgow cds	£125.00
100	Sg 8m 1d Red Brown No 6 in Maltese Cross. A superb used 4 margin example with upright strike	£60.00	123	Sg 19wi 2d Blue Plate 4 OD INVERTED WATERMARK. A fine used example	£125.00
101	Sg 8m 1d Red No 7 in Maltese Cross. A superb used 4 margin example tied to small piece	£95.00	124	Sg 21 Spec C4 1d Red Plate 2 JB-JC USED IN CRIMEA. A very fine used horizontal pair	£125.00
102	Sg 8m 1d Red Brown No 7 in Maltese Cross. A superb used 4 margin example with upright strike	£95.00	125	Sg 22 Spec C2 1d Red Plate 194 PC. A very fine used example accompanied by Mike Williams certificate	£175.00
103	Sg 8m 1d Red No 7 in Maltese Cross. A superb used example tied to small piece	£75.00	126	Sg 22 Spec C2 1d Red Plate 196 SJ. A fine used example accompanied by Mike Williams certificate	£225.00
104	Sg 8m 1d Red No 7 in Maltese Cross. A superb used 4 margin example	£70.00	127	Sg 23 2d Blue Plate 4 NI. A superb used example with steel cds	£325.00
105	Sg 8m 1d Red Plate 30 No 8 in Maltese Cross. A very fine used 4 margin example with Fenchurch St on piece	£95.00	128	Sg 23a Spec F3wd 2d Blue Plate 5 FF GREEN NUMERAL. A very fine used example	£225.00
106	Sg 8m 1d Red Brown No 8 in Maltese Cross. A superb used 4 margin example with upright strike	£75.00	129	Sg 24 Spec C3wd 1d Red Plate 8 RA. A very fine used example with Green Town Postmark	£325.00
107	Sg 8m 1d Red Brown No 8 in Maltese Cross MISSING IMPRIMATUR Plate 38. A fine used 4 margin example	£50.00	130	Sg 24 Spec C3 1d Red Plate 16 MI. A very fine used example accompanied by Mike Williams certificate, slightly short perf at base, scarce plate	£375.00
108	Sg 8m 1d Red No 9 in Maltese Cross. A very fine used 4 margin example	£75.00	131	Sg 24 Spec C3(1) 1d Red Plate 19 ID. A fine used example accompanied by Mike Williams certificate	£225.00
109	Sg 8m 1d Red No 11 in Maltese Cross. A very fine used 4 margin example	£50.00	132	Sg 24 Spec C3 1d Red Plate 21 GE. A very fine used example accompanied by Mike Williams certificate, couple of slight short perfs at base	£175.00
110	Sg 14 2d Blue Plate 3 CD. A superb used 4 margin example	£75.00	133	Sg 26 Spec C5 1d Red Plate 13 DL. A very fine used example SCARCE PLATE	£395.00
111	Sg 14 2d Blue Plate 3 DB. A very fine used 4 margin example	£75.00	134	Sg Spec C6ug 1d Red Plate 14 ED. A fine used example with Brown 882 Wimbourne Postmark ex. Wiggins	£225.00
112	Sg 14 Spec ES11i 2d Blue Plate 3 NJ "J FLAW". A very fine used 4 margin example	£75.00	135	Sg Spec C9A 1d Pale Rose Plate 49 JF. A very fine used example accompanied by Mike Williams Certificate	£175.00
113	Sg 14 Spec ES11wb 2d Blue Plate 3 GH. A fine used 4 close to good margin example on piece with Llanelli Blue 469 numeral	£195.00	136	Sg 34 2d Blue KC. A fine used example with SCARCE Blue Numeral	£95.00
114	Sg 14 Spec ES14n 2d Blue Plate 4 BH "WITHOUT SPECTACLES". A fine used 4 margin example	£375.00	137	Sg 34 Spec F6 2d Blue Plate 5 BB. A very fine used example with Dublin Diamond on piece	£30.00
115	Sg 14 Spec ES14o 2d Blue Plate 4 BG-BH "BH SPECTACLES VARIETY". A very fine used 4 margin pair	£375.00	138	Sg 34 Spec F6wb 2d Blue Plate 5 BH BLUE NUMERAL. A very fine used example on piece	£175.00
116	Sg 14 Spec ES14o 2d Blue Plate 4 BH "SPECTACLES VARIETY". A very fine used 4 margin example	£325.00	139	Sg 34 Spec F6wd 2d Blue Plate 5 FF GREEN NUMERAL. A very fine used example	£95.00
117	Sg 14f 2d Blue No 1 in Maltese Cross. A very fine used 4 margin example	£450.00	140	Sg 34 Spec F6wd 2d Blue Plate 5 GD GREEN NUMERAL. A fine used example	£95.00
118	Sg 14wi 2d Blue Plate 3 TA WATERMARK INVERTED. A very fine used 4 margin example	£425.00	141	Sg 34 Spec F6wb 2d Blue Plate 5 KJ BLUE NUMERAL 131 of Edinburgh. A very fine used example	£125.00
119	Sg 14f 2d Blue No 12 in Maltese Cross. A fine used 4 margin pair	£295.00	142	Sg 34 Spec F7 2d Blue Plate 6 SB. A fine used example used in Malta "M" Postmark	£60.00
120	Sg 17 Spec C1 1d Red Plate 167 TF "MIS-PERF". A superb used example	£50.00			

Call now to place your order on tel: 01827 63367



143	Sg 35 2d Blue Plate 6 Fl. A superb used example tied to small piece with a "KILWINNING" Scots Local RARE	£250.00	167	Sg 43 1d Red Plate 137. A superb Post Office fresh unmounted mint example	£38.00
144	Sg 36 Spec C11 1d Rose-Red Plate 38 KF. A very fine used example accompanied by Mike Williams certificate	£395.00	168	Sg 43 1d Red Plate 146. A superb unmounted mint example	£50.00
145	Sg 36 Spec C11 1d Rose-Red Plate 45 BH. A very fine used example accompanied by Mike Williams certificate	£375.00	169	Sg 43 1d Red Plate 196. A superb unmounted mint example	£58.00
146	Sg 36 Spec C11 1d Red Plate 49 ML. A very fine used example accompanied by Mike Williams certificate	£325.00	170	Sg 43 1d Red Plate 209. A superb unmounted mint example	£38.00
147	Sg 36a 2d Blue Plate 6. A superb mounted mint example accompanied by RPS certificate	£5,250.00	171	Sg 43 1d Red Plate 220. A superb Post Office fresh unmounted mint example	£50.00
148	Sg 36a 2d Blue Plate 6 DA. A very fine used example with light numeral	£150.00	172	Sg 47 2d Blue Plate 14. An unmounted mint example	£325.00
149	Sg 36a 2d Blue Plate 6 FJ. A very fine used example	£150.00	173	Sg 48 ½d Red Plate 1. A very fine used example tied to small piece with Oct 1st 1870 FIRST DAY OF ISSUE postmark.	£295.00
150	Sg 36a 2d Blue Plate 6 KD. A very fine used example	£150.00	174	Sg 48 ½d Red Plate 9. A very fine used example, well centered	£325.00
151	Sg 36a 2d Blue Plate 6 PE "RE-ENTRY". A very fine used example	£225.00	175	Sg 48 ½d Red Plate 11. A superb unmounted mint block of 4	£225.00
152	Sg 40 Spec C9(3) 1d Pale Red Plate 40 KH. A very fine used example accompanied by Mike Williams certificate	£195.00	176	Sg 48 ½d Red Plate 20. A superb unmounted mint example	£225.00
153	Sg 40 Spec C9(3) 1d Pale Red Plate 45 NC. A very fine used example accompanied by Mike Williams certificate, side perfs trimmed	£85.00	177	Sg 51 1½d Rose Red Plate 3. A superb used example with Portsmouth cds	£50.00
154	Sg 40 Spec C10 1d Red Plate 39 LI. A very fine used example with Inspector mark postmark	£75.00	178	Sg 52 1½d Lake Red Plate 1. A superb unmounted mint example	£350.00
155	Sg 40 Spec C10 1d Red Plate 45 LD. A fine used example with slight short perf top left accompanied by Mike Williams certificate	£95.00	179	Sg 52 1½d Lake Red Plate 1. A superb used example with steel cds	£50.00
156	Sg 40 Spec C10d 1d Red Plate 46 TA "ERROR OF WATERMARK". A very fine used example	£325.00	180	Sg 55 1/- Green. A very fine used 4 margin example	£395.00
157	Sg 40 1d Red Plate 57 Used in British Guiana. A very fine used example accompanied by RPS certificate	£275.00	181	Sg 66 4d Rose Carmine Used in Highgate Jamaica A47. A very fine used example	£250.00
158	Sg Spec C12g 1d Red Plate 51 TA "ERROR OF WATERMARK". An average used example, trimmed perfs	£325.00	182	Sg 66 4d Rose Carmine Used in Mandeville Jamaica A53. A very fine used example	£175.00
159	Sg 43 1d Red Plate 85. A superb unmounted mint example	£50.00	183	Sg 66 4d Rose Carmine Used in Ramble Jamaica A69. A very fine used example	£295.00
160	Sg 43 1d Red Plate 87. A superb unmounted mint example	£42.00	184	Sg 66a 4d Rose. A fine example used in Kingston Jamaica AO1	£125.00
161	Sg 43 1d Red Plate 98. A superb unmounted mint example	£60.00	185	Sg 76 3d Bright Carmine-Rose. A superb used example with Canterbury cds	£150.00
162	Sg 43 1d Red Plate 101. A superb Post Office fresh unmounted mint example	£70.00	186	Sg 80 4d Pale Red. A superb used example with Malta cds	£75.00
163	Sg 43 1d Red Plate 116. A superb unmounted mint example	£85.00	187	Sg 81 4d Bright Red. A superb lightly mounted mint example	£675.00
164	Sg 43 1d Red Plate 117 Used in Tampico Mexico. A very fine used example	£140.00	188	Sg 90 1/- Green. A very fine lightly mounted mint example	£675.00
165	Sg 43 1d Red Plate 136. A superb unmounted mint example	£115.00	189	Sg 104 6d Lilac. A superb used example with steel cds	£75.00
166	Sg 43 1d Red Plate 136. A superb Post Office fresh unmounted mint example	£95.00	190	Sg 109 6d Mauve Plate 9. A superb used example with Blyth cds	£45.00
			191	Sg 112 10d Red Brown. A superb unmounted mint example	£2,250.00
			192	Sg 118var 2/- Blue IMPRIMATUR with Plate No. A superb example	£4,750.00
			193	Sg 125 6d Grey. A superb unmounted mint example	£975.00

Call now to place your order on tel: 01827 63367



194	Sg 127 5/- Pale Rose Plate 2. A superb used example with Glasgow cds, well centered	£675.00	222	Sg 181 5/- Crimson. A very fine used example with Belfast cds	£75.00
195	Sg 128 10/- Greenish Grey. A superb used example with Glasgow cds	£1,295.00	223	Sg 183 10/- Ultramarine. A very fine used example upright London cds	£225.00
196	Sg 129 £1 Brown Lilac. A very fine used example with Glasgow steel cds	£2,500.00	224	Sg 183a 10/- Pale Ultramarine. A superb unmounted mint side marginal example	£2,200.00
197	Sg 129 £1 Brown Lilac. A superb used example Inverness cds	£1,950.00	225	Sg 185 £1 Brown Lilac. A very fine used example with Cornhill cds's	£725.00
198	Sg 130 5/- Rose Blue Paper. A superb used example with upright Bournemouth cds	£2,250.00	226	Sg 186 £1 Brown Lilac. A superb used example with Bristol cds, slight crayon	£1,295.00
199	Sg 131 10/- Grey-Green. A very fine used example with Llanelly Docks cds	£2,500.00	227	Sg 186 £1 Brown Lilac. A fine used example	£1,125.00
200	Sg 142 2½d Blue Plate 18. A superb unmounted mint example	£525.00	228	Sg 190 2½d Lilac OVPT SPECIMEN. A lightly mounted mint example	£50.00
201	Sg 142 2½d Blue Plate 19. A superb unmounted mint example	£425.00	229	Sg 192 4d Dull Green. A superb unmounted mint example	£450.00
202	Sg 143 3d Rose Plate 15. A superb unmounted mint example	£475.00	230	Sg 195 9d Dull Green. A very fine used example with Dover cds	£195.00
203	Sg 143 3d Rose Plate 17. A superb used example with Middlesbrough cds	£75.00	231	Sg 198var 1½ Reply Paid Essay in Blue Imperf. A superb unmounted mint block of 4	£575.00
204	Sg 150 1/- Green Plate 13. A superb Post Office fresh unmounted mint example	£595.00	232	Sg 199 2d Green & Scarlet. A superb unmounted mint example	£350.00
205	Sg 150 1/- Green Plate 13 Used in Port-au-Prince E53. A fine used example	£95.00	233	Sg 207a 5d Dull Purple & Ultramarine Die II. A superb used example with Brighton cds	£12.00
206	Sg 152 4d Vermilion . A superb used example with St Thomas cds	£375.00	234	Sg 214 Var Spec K41b 1/- Green & Carmine FRAME BREAK AT LEFT. A superb unmounted mint example	£425.00
207	Sg 154 4d Grey Brown. A superb lightly mounted mint example, excellent centering	£1,000.00	235	Sg O5 ½d Slate Blue OVPT I.R.OFFICIAL. A superb unmounted mint example	£95.00
208	Sg 157 2½d Blue Plate 21. A superb used example with Croydon cds	£25.00	236	Sg O35 10d Dull Purple & Carmine OVPT O.W.OFFICIAL. A superb mounted mint example accompanied by David Brandon certificate	£4,750.00
209	Sg 157 2½d Blue Plate 23. A superb unmounted mint example	£295.00	237	Sg O45 6d Purple/Rose Red Ovpt ARMY OFFICIAL. A superb unmounted mint example	£95.00
210	Sg 158 3d Rose Plate 21. A superb unmounted mint example	£475.00	238	Sg O45 6d Purple/Rose Red OVPT ARMY OFFICIAL. A superb unmounted mint example	£90.00
211	Sg 158 3d Rose Plate 21. A superb used example with Liverpool cds	£40.00	239	Sg O45 6d Purple/Rose-Red OVPT ARMY OFFICIAL. A superb unmounted mint example	£85.00
212	Sg 159 3d on 3d Lilac. A superb unmounted mint example	£575.00	240	Sg O63 9d Dull Green OVPT GOVT PARCELS. A lightly mounted mint example accompanied by Wenvoe certificate	£1,375.00
213	Sg 160 4d Grey Brown Plate 18. A superb unmounted mint example	£350.00	241	Sg O71 4½d Green & Carmine OVPT GOVT PARCELS. A lightly mounted mint example	£125.00
214	Sg 163 1/- Orange Brown Plate 13. A superb used example with Derby Post Office cds	£75.00	242	Sg T10 1/- Brown Orange Plate 11. A superb used example	£125.00
215	Sg 168 2d Pale Rose. A very fine used example with Blue numeral	£25.00	243	Sg 218a ½d Yellow Green ST ANDREWS CROSS on cover. A very fine used example	£250.00
216	Sg 168as 2d Deep Rose OVPT SPECIMEN. A fine mounted mint block of 4	£195.00	244	Sg 218a ½d Green ST ANDREWS CROSS. A lightly mounted mint block of 4	£130.00
217	Sg 172var 1d Plate Proof in Lilac on Green. A fine used 4 margin example	£95.00	245	Sg 218a ½d Yellow Green ST ANDREWS CROSS. A superb used pair with St Leonards-on-sea cds	£125.00
218	Sg 172var 1d Lilac IMPRIMATUR. A lightly mounted mint 4 margin example	£95.00	246	Sg 219 Spec MB5 1d Scarlet Booklet Pane. An unmounted mint example with upright watermark	£125.00
219	Sg 178 2/6 Lilac. A superb unmounted mint example	£475.00			
220	Sg 181 5/- Crimson. A superb Post Office fresh unmounted mint example	£695.00			
221	Sg 181 5/- Crimson. A superb used example with Perfect Paisley cds	£150.00			

Call now to place your order on tel: 01827 63367



247	Sg 220 Spec M5 var UNLISTED 1d Intense Bright Scarlet. A superb unmounted mint example accompanied by Hendon certificate (copy)	£750.00	270	Sg 264 Spec M51(2) 5/- Deep Bright Carmine. A superb unmounted mint example accompanied by Hendon certificate	£575.00
248	Sg 224 Spec M9(3) 1½d Deep Slate Purple & Bluish Green. A superb unmounted mint example	£42.00	271	Sg 264 5/- Deep Bright Carmine. A superb unmounted mint example	£525.00
249	Sg 225 M11 var UNLISTED 2d Yellowish Green & Deep Bright Carmine. An unmounted mint example accompanied by Hendon certificate	£325.00	272	Sg 264 5/- Deep Bright Carmine. A very fine used example with Clonmel cds	£75.00
250	Sg 225 var 2d Yellowish Green & Deep Bright Carmine. A lightly mounted mint example accompanied by a Hendon certificate	£225.00	273	Sg 264 5/- Deep Bright Carmine. A very fine used example with Guernsey cds	£60.00
251	Sg 226 var UNLISTED 2d Grey Green & Deep Carmine Red. A fine mounted mint example	£150.00	274	Sg 265 10/- Ultramarine. A very fine unmounted mint example	£975.00
252	Sg 228 2d Pale Grey Green & Scarlet (c). A superb unmounted mint example	£38.00	275	Sg 266 £1 Dull Blue Green. A superb lightly mounted mint example	£975.00
253	Sg 229 Spec M12 var UNLISTED 2d Deep Blue Green & Carmine Red (c). A superb unmounted mint example accompanied by Hendon certificate	£225.00	276	Sg 268(var) ½d Dull Green Partial Offset. An unmounted mint example	£35.00
254	Sg 229 Spec M12(2) 2d Dull Blue Green & Bright Carmine (c). A superb unmounted mint example	£65.00	277	Sg 269 Spec M3 var UNLISTED ½d Very Deep Dull Yellow Green (very blotchy). A superb unmounted mint example accompanied by Hendon certificate	£195.00
255	Sg 236 Spec M23(3) 4d Green & Chocolate Brown. An unmounted mint example	£65.00	278	Sg 269 Spec M3 (4) ½d Deep Dull Yellow (Blotchy). An unmounted mint example	£45.00
256	Sg 245 6d Pale Dull Purple. A very fine used example JA 1 02 1st DAY OF ISSUE Postmark	£75.00	279	Sg 270a ½d Pale Blue Green ST ANDREWS CROSS. A superb unmounted mint pair	£450.00
257	Sg 245 Spec M31(1) 6d Pale Dull Purple. An unmounted mint example	£38.00	280	Sg 270a ½d St Andrews Cross. A mounted mint pair	£250.00
258	Sg 246 Spec M31 var UNLISTED 6d Deep Slate-Purple. An unmounted mint example accompanied by Hendon certificate	£140.00	281	Sg 272 Spec M6 var UNLISTED 1d Very Deep Rose-Red. An unmounted mint example accompanied by Hendon certificate, complete off-set on reverse	£195.00
259	Sg 246 6d Slate Purple. A superb used example with Leeds cds	£15.00	282	Sg 272a Spec M6 var UNLISTED 1d Intense Brick-Red No Watermark. An unmounted mint example accompanied by Hendon certificate	£525.00
260	Sg 248 Spec M32 var UNLISTED 6d Deep Slate-Purple (c). An unmounted mint example accompanied by Hendon certificate (copy)	£140.00	283	Sg 272a 1d Rose-Red No Watermark. A superb unmounted mint block of 4	£175.00
261	Sg 249a Spec M37 UNLISTED 7d Very Deep Grey Black. A mounted mint example accompanied by a Hendon certificate	£125.00	284	Sg 273 Spec M6(3) 1d Intense Rose-Red. An unmounted mint example accompanied by Hendon certificate	£220.00
262	Sg 250a Spec M40(1) var 9d Dull Purple & Ultramarine (OCP). An unmounted mint example accompanied by Hendon certificate	£350.00	285	Sg 273 Spec M6(3) 1d Intense Rose-Red. A superb unmounted mint Control A11 example accompanied by a Hendon certificate	£225.00
263	Sg 251 9d Slate Purple & Ultramarine. A superb used example with Honiton cds	£25.00	286	Sg 273 Spec M6(3) 1d Intense Rose-Red. A superb unmounted mint example	£220.00
264	Sg 255 10d Slate Purple & Carmine (c). A superb unmounted mint example	£120.00	287	Sg 274 Spec M6 var UNLISTED 1d Intense Rose Carmine. A superb unmounted mint example accompanied by Hendon certificate	£1,500.00
265	Sg 256 10d Dull Purple & Scarlet. An unmounted mint example	£120.00	288	Sg 274 Spec M6 var UNLISTED 1d Deep Carmine. An unmounted mint example accompanied by Hendon certificate	£750.00
266	Sg 256 10d Dull Purple & Scarlet (c). A superb unmounted mint example	£120.00	289	Sg 274 Spec M6 var UNLISTED 1d Intense Carmine-Red. An unmounted mint example accompanied by Hendon certificate	£725.00
267	Sg 257 1/- Dull Green & Carmine. A superb used example with Chesham cds	£20.00	290	Sg 274 Spec M6 Var UNLISTED 1d Deep Carmine-Red. An unmounted mint example accompanied by a Hendon certificate	£325.00
268	Sg 260 2/6 Lilac. A very fine used example with Vigo St cds	£45.00	291	Sg 275 1d Aniline Pink. A superb used example with Bournemouth cds	£225.00
269	Sg 264 5/- Deep Bright Carmine. A superb unmounted mint example	£625.00	292	Sg 276 Spec M17(1) var 2½d Deep Bright Blue. An unmounted mint example with split watermark	£125.00

Call now to place your order on tel: 01827 63367



293	Sg 281 var UNLISTED 1d Deep Carmine. An unmounted mint corner marginal example accompanied by a Hendon certificate	£175.00	315	Sg 084 1d Scarlet OVPT BOARD OF EDUCATION. A superb unmounted mint example	£150.00
294	Sg 281 Spec M7 var UNLISTED 1d Intense Carmine. A superb unmounted mint example accompanied by Hendon certificate	£425.00	316	Sg 085 2½d Ultramarine OVPT BOARD OF EDUCATION. A superb unmounted mint example accompanied by RPS certificate	£3,950.00
295	Sg 281 Spec M7 var UNLISTED 1d Intense Rose-Carmine. An unmounted mint example accompanied by Hendon certificate	£240.00	317	Sg 0105 2½d Ultramarine OVPT ADMIRALTY OFFICIAL. A superb unmounted mint example	£395.00
296	Sg 281 Spec M7 Var UNLISTED 1d Intense Rose Carmine. A lightly mounted mint example accompanied by a Hendon certificate	£150.00	318	Sg 0107 ½d Blue Green OVPT ADMIRALTY OFFICIAL. A superb unmounted mint example	£45.00
297	Sg 283 Spec M18 var UNLISTED 2½d Pale True-Blue. An unmounted mint bottom marginal example accompanied by Hendon certificate	£395.00	319	1911 1d Paper Trial in Scarlet John Allen Special finish paper "Q". A fine pair	£120.00
298	Sg 283 Spec M18 var UNLISTED 2½d Deep True Blue. An unmounted mint example accompanied by Hendon certificate	£295.00	320	1912 1d Paper Trial Die II in Carmine on John Dickinson extra super fine paper (Spec a). Vertical pair	£125.00
299	Sg 284 Spec M18(3) var UNLISTED 2½d Dull Blue (double gum) UNLISTED. An unmounted mint example accompanied by Hendon certificate	£140.00	321	1912 1d Scarlet DIE 2 Paper Trial . A John Allen Type "E" 4 margin pair	£120.00
300	Sg 288 Spec M10 var 1½d Deep Plum & Pale Green. A superb unmounted mint example accompanied by Hendon certificate	£225.00	322	1912 1d Paper Trial Die II on John Allen finish paper (Spec e).	£65.00
301	Sg 288 Spec M10(6) 1½d Deep Plum & Deep Green. An unmounted mint example accompanied by Hendon certificate	£225.00	323	1912 1d Paper Trial John Allen Special finish gummed paper "L" . An unmounted mint example	£50.00
302	Sg 288 Spec M10(6) 1½d Deep Plum & Deep Green. A superb unmounted mint example accompanied by Hendon certificate	£225.00	324	Sg 323 ½d Bluish Green. A superb unmounted mint example accompanied by RPS certificate (copy)	£175.00
303	Sg 296s 6d Bright Magenta OVPT SPECIMEN. A superb lightly mounted mint example with excellent centering	£3,250.00	325	Sg 328a 1d Carmine NO CROSS ON CROWN. A superb unmounted mint example	£875.00
304	Sg 305 Spec M38(1) 7d Deep Slate Grey. An unmounted mint example	£140.00	326	Sg 329 Spec N8f 1d Carmine "small white spot on forehead" A11 Control Single. An unmounted mint example	£125.00
305	Sg 309 Spec M44 UNLISTED 10d Reddish Purple & Deep Scarlet. A fine used example accompanied by Hendon certificate	£60.00	327	Sg 341wi 1d Scarlet INVERTED WATERMARK. A superb lightly mounted mint example	£275.00
306	Sg 311 10d Dull Reddish Purple & Carmine. An unmounted mint side marginal example	£95.00	328	Sg 350a 1d Scarlet NO CROSS IN CROWN. A fine mounted mint pair	£75.00
307	Sg 311 10d Dull Reddish Purple & Carmine. An unmounted mint example	£88.00	329	Sg 353 Spec N14(5) ½d Very Deep Green. A superb unmounted mint example accompanied by Hendon certificate	£375.00
308	Sg 313wi 1/- Deep Green & Scarlet INVERTED WATERMARK. A superb unmounted mint example	£175.00	330	Sg 353 Spec N14(5) ½d Very Deep Green. A superb unmounted mint example accompanied by Hendon certificate (copy)	£375.00
309	Sg 314 1/- Green & Carmine. A superb unmounted mint top marginal example	£90.00	331	Sg 356 var ½d Deep Blue Green. An unmounted corner marginal example accompanied by Hendon certificate	£125.00
310	Sg 316 2/6 Dull Reddish Purple. A very fine mounted mint example	£175.00	332	Sg 358 Spec N16 var UNLISTED 1d Very Pale Bright Vermilion. A very fine used example on piece accompanied by Hendon certificate	£95.00
311	Sg 317 2/6 Dark Purple. A superb unmounted mint example	£425.00	333	Sg 360 Spec N16 var UNLISTED 1d Deep Carmine. A superb unmounted mint example accompanied by Hendon certificate (copy)	£225.00
312	Sg 319 10/- Blue. A superb used example with Highbury cds	£275.00	334	Sg 361 Spec N16(15) 1d Orange Vermilion. A lightly mounted mint example accompanied by an RPS certificate	£120.00
313	Sg 050 6d Pale Dull Purple OVPT ARMY OFFICIAL. An unmounted mint example	£125.00	335	Sg 382a 5d Brown NO WATERMARK. A superb unmounted mint example	£975.00
314	Sg 076 6d Pale Dull Purple OVPT GOVT PARCELS. A superb unmounted mint example	£175.00	336	Sg 383 5d Bistre Brown. A lightly mounted mint example accompanied by RPS certificate	£95.00

Call now to place your order on tel: 01827 63367



337	Sg 384 Spec N26 (2) 6d Slate Purple. A superb unmounted mint corner marginal example	£150.00
338	Sg 390 8d Black/Yellow. An unmounted J17 control strip of 3 (LMM in margin)	£85.00
339	Sg 390 8d Black/Yellow. An unmounted mint C.13 Control Single	£40.00
340	Sg 390 8d Black/Yellow. An unmounted mint F15(P) Control Single	£37.00
341	Sg 392wi 9d Agate WATERMARK INVERTED/REVERSED. An unmounted mint example	£175.00
342	Sg 394wk 10d Turquoise Blue WATERMARK INVERTED/REVERSED. A superb unmounted mint example, mounted in margin	£450.00
343	Sg 400 2/6 Sepia Brown. A very fine used example with cds	£70.00
344	Sg 409 5/- Bright Carmine. A superb unmounted mint example	£525.00
345	Sg 411 10/- Deep Blue. A lightly mounted mint example	£1,295.00
346	Sg 413a-7 2/6 5/- & 10/- Bradbury. A superb unmounted mint set of 3	£795.00
347	Sg 417 10/- Dull Grey Blue. A superb used example with Jersey cds	£75.00
348	Sg 418 Spec N33(2) var ½d Pale Green PRINTED ON UNGUMMED PAPER. A superb example accompanied by an RPS certificate	£95.00
349	Sg 419 Spec N34f 1d Scarlet GASH IN CROWN. A very fine mounted mint example in Control E26 pair	£95.00
350	Sg 420a 1½d Red Brown Tete-Beche Strip of 4. A superb lightly mounted mint strip	£225.00
351	Sg 420c 1½d Red Brown PRINTED ON THE GUM SIDE. A superb unmounted mint example	£825.00
352	Sg 434a-6a A superb used set with SIDEWAYS WATERMARK.	£75.00
353	Sg 435 Spec NCombe 1d Scarlet CO JOINED . An unmounted mint K29 corner block of 6	£150.00
354	Sg 438 £1 Black. A superb unmounted mint example	£625.00
355	Sg 441var 1½d Imperf Colour Trail in Ultramarine. A mounted mint example	£75.00
356	Sg 450-2 2/6 5/- & 10/- Re-engraved. A superb unmounted mint set of 3	£675.00
357	Sg 453var ½d Green Propaganda Forgery. A very fine used example	£95.00
358	Sg 453var ½d Green Propaganda Forgery. An unused corner marginal example	£95.00
359	Sg 461 1½d Maroon Propaganda Forgery. A superb used corner marginal example	£95.00
360	Sg 462-467 ½d-3d Propaganda Forgery Set. A very fine used set	£175.00
361	Sg 463 Spec QB21s 1½d Red Brown. A superb unmounted mint block Cancelled & Punched	£225.00
362	Sg 488var 2d Pale Orange HUGE MIS-PERF. A superb unmounted mint example	£95.00

363	Sg 544 2½d Carmine PAPER JOIN, leaving unprinted area on bottom 2. An unmounted mint block of 4	£125.00
364	Sg 573var 2d Red Brown PAPER FOLD. A superb unmounted mint example	£95.00
365	Sg X893a 11½p Drab Imperf Marginal Block of 4. A superb unmounted mint block	£325.00
366	Sg Spec CS18 1d Black on Magenta Selwyn College. A lightly mounted mint example	£75.00
367	Sg D4 var 2d Colour Trial in Bartolozzi Brown OVPT SPECIMEN. A lightly mounted mint example	£60.00
368	Sg D18s 2/6 Purple/Yellow OVPT SPECIMEN. An unmounted mint example	£60.00
369	Sg D35 Spec R35a ½d Yellow Orange BROKEN 2 IN ½. A very fine used example	£25.00
370	Sg D50var 3d Violet SUPERB MIS-PERF. An unmounted mint example	£75.00

**Terms and Conditions:** All items are described as accurately as possible, but any item returned within 7 days will receive a refund. If a purchaser buys any item with a certificate, the purchaser shall not be entitled to make a claim against us for an error, omission or mistake in such certificate. Customers statutory rights are not affected by the above.

*We also sell a wide range of Commonwealth items, and publish a regular list of newly available items.*

*If you would like to receive these lists, please let us know.*

*You can also view our range of Commonwealth items online:*

[www.imperiumstamps.co.uk](http://www.imperiumstamps.co.uk)



Call now to place your order on tel: 01827 63367





182



183



184



185



186



189



190



208



196



198



219



220



221



222



212



214



215



217



218



223



216



227



228



230



242



232



233



237



238



239



241



244



248



249



245



243



250



251



252



253



254



246





255



256



257



258



259



260



261



262



263



264



265



266



267



276



278



268



270



272



273



280



277



281



289



291



284



286



288



283



285



290



290



291



292



294



295



293



296



296



297



298



299



301



302



293



296



296



297



298



305



307



308



313



317



306



306



309



310



311



312



312



319



321



319



322





320



323



326



327



328



330



333



332



367



336



348



331



337



339



338



334



352



343



363



346



356



368



369



340



349



353



342



360





7



11



14



17



19



21



54



84



87



99



115



119



156



158



187



200



202



204



205



206



210



211



224



225



229



231



234



247



282



271



274



300



304



275



279



329



341



351



347



357



358



359



361



365